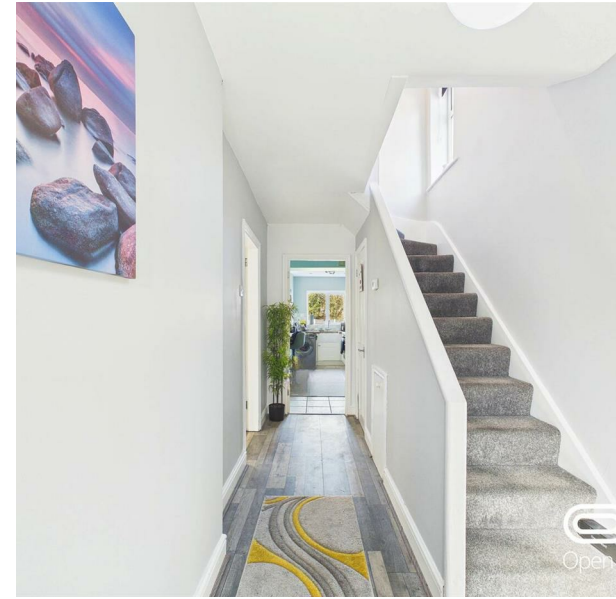


Chesham Road, Stafford, ST16 3JP

£245,000

Council Tax Band: B

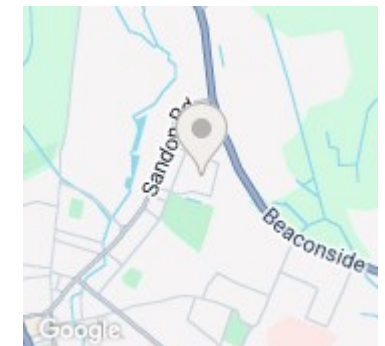


Three-Bedroom Family Home | Spacious Living | Large Rear Garden | Driveway

Positioned on the ever-popular Chesham Road in Stafford, this extended three-bedroom semi-detached home offers generous living space, a fantastic rear garden, and excellent practicality for modern family life.



Open House Staffordshire



Energy Efficiency Rating		Current	Potential
Very energy efficient - lower running costs			
(92 plus)	A		
(81-91)	B		85
(69-80)	C	70	
(55-68)	D		
(39-54)	E		
(21-38)	F		
(1-20)	G		
Not energy efficient - higher running costs			
<b>England &amp; Wales</b>		EU Directive 2002/91/EC	