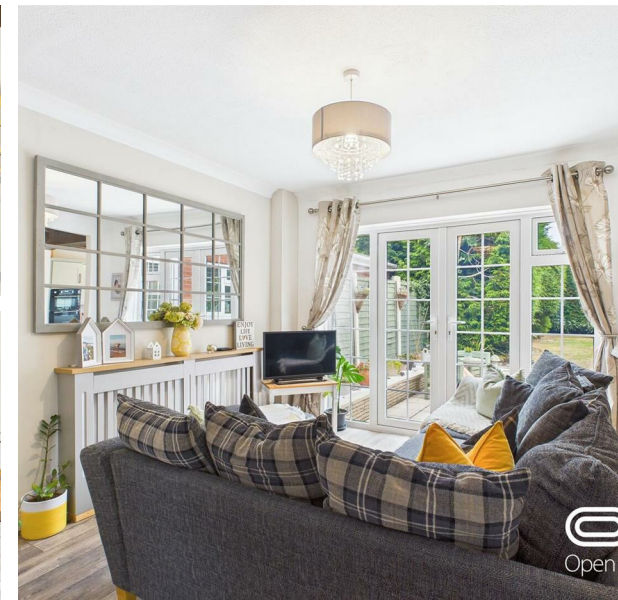


Abbey Drive, Little Haywood, ST18 0QQ

Offers Over £410,000

Council Tax Band: D



Spacious 4-Bed Detached Family Home with Garden and Garage – Abbey Drive, Little Haywood

Positioned in the sought-after village of Little Haywood, this spacious four-bedroom detached home on Abbey Drive offers the perfect balance of comfort, practicality, and charm. With approximately 1,485 sq ft of living space, it’s a superb choice for families looking for room to grow in a peaceful yet well-connected setting.



Open House Staffordshire



Energy Efficiency Rating		
	Current	Potential
Very energy efficient - lower running costs		
(92 plus) A		84
(81-91) B		
(69-80) C	71	
(55-68) D		
(39-54) E		
(21-38) F		
(1-20) G		
Not energy efficient - higher running costs		
England & Wales		EU Directive 2002/91/EC 