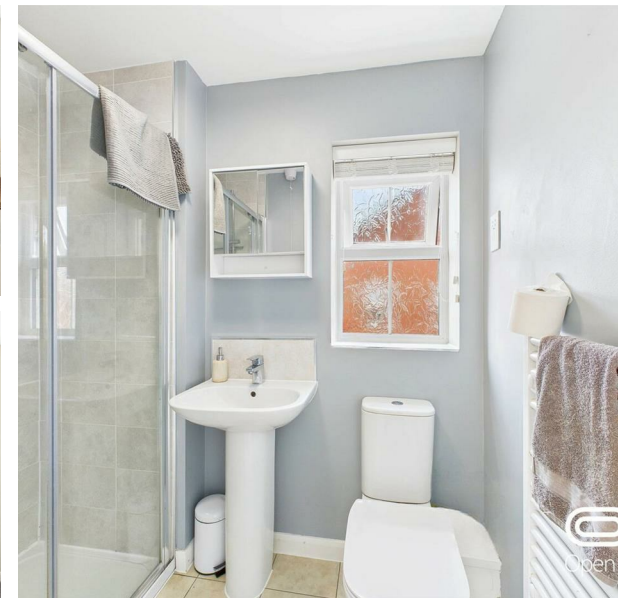
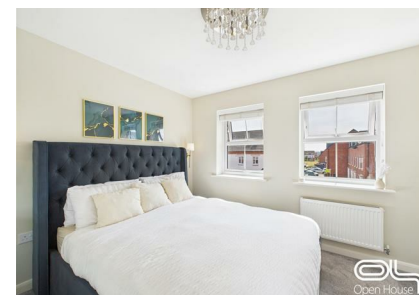


Dewsbury Crescent, Stafford, ST18 0YW

Offers Over £245,000

Council Tax Band: C



Situated on Dewsbury Crescent in Stafford, this modern three-bedroom semi-detached home, built in 2017, combines contemporary style with practical family living. Offering around 840 sq. ft. of well-planned space, it's ideal for first-time buyers, young families, or professionals.



Open House Staffordshire



Energy Efficiency Rating		
	Current	Potential
Very energy efficient - lower running costs		
(92 plus) A		96
(81-91) B	83	
(69-80) C		
(55-68) D		
(39-54) E		
(21-38) F		
(1-20) G		
Not energy efficient - higher running costs		
England & Wales	EU Directive 2002/91/EC	