

**Winding House Drive, Hednesford, WS12 4FP**  
**Offers In The Region Of £285,000**  
**Council Tax Band: D**



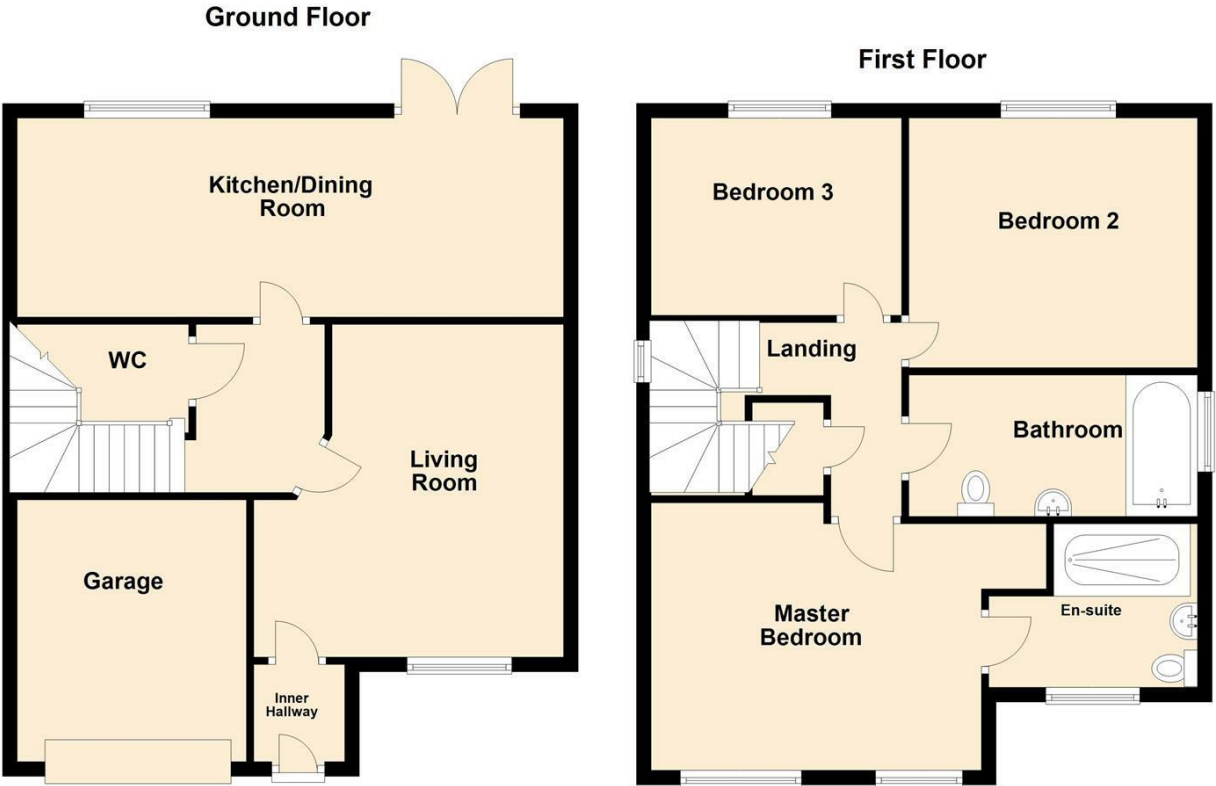


A Modern Detached Family Home in a Popular Cannock Chase Location – Winding House Drive, Hednesford

Situated in a sought-after modern development just a stone’s throw from the stunning Cannock Chase Area of Outstanding Natural Beauty, this stylish three-bedroom detached home on Winding House Drive offers the perfect balance of comfort, practicality, and convenience.



Open House Staffordshire



Energy Efficiency Rating		
	Current	Potential
Very energy efficient - lower running costs		
(92 plus) <b>A</b>		93
(81-91) <b>B</b>	81	
(69-80) <b>C</b>		
(55-68) <b>D</b>		
(39-54) <b>E</b>		
(21-38) <b>F</b>		
(1-20) <b>G</b>		
Not energy efficient - higher running costs		
England & Wales	EU Directive 2002/91/EC	