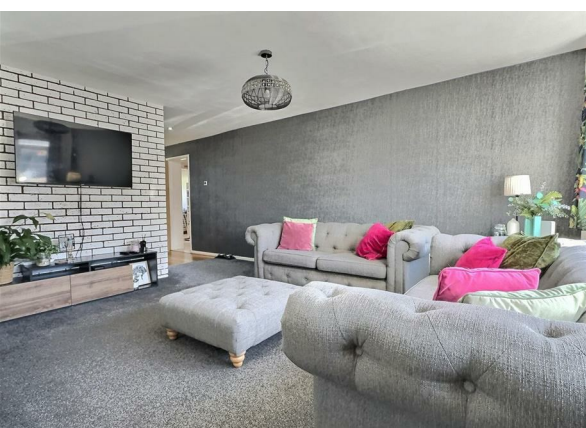
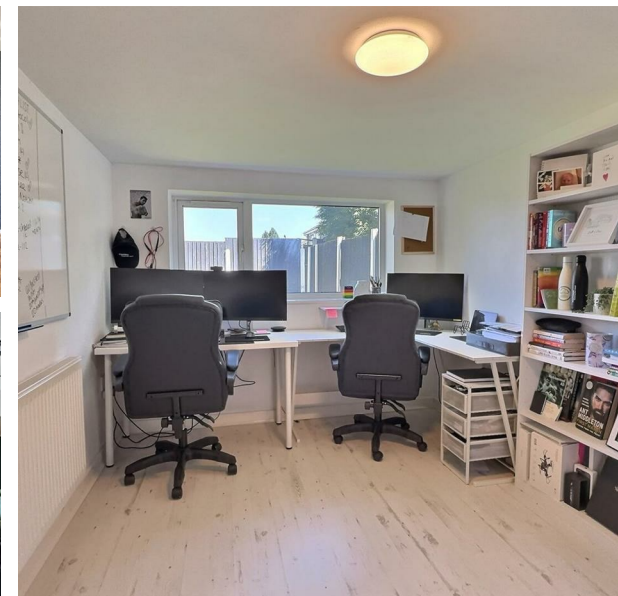


March Banks, Rugeley, WS15 2SA
Offers In The Region Of £270,000
Council Tax Band: C



Tucked away in the popular and family-friendly area of Western Springs, Rugeley, this beautifully presented link detached home on March Banks offers spacious and versatile accommodation, ideal for modern family living. Extending to approximately 1,066 sq ft, the property features a thoughtfully updated layout including three upstairs bedrooms, a stylish open-plan kitchen diner, and a large lounge flooded with natural light.



Open House Staffordshire



Energy Efficiency Rating		
	Current	Potential
Very energy efficient - lower running costs		
(92 plus) A		
(81-91) B		
(69-80) C		
(55-68) D		
(39-54) E		
(21-38) F		
(1-20) G		
Not energy efficient - higher running costs		
England & Wales	EU Directive 2002/91/EC	