

OFFERS IN THE REGION OF

**£175,000**

**Victoria Terrace**

Stafford, ST16 3HA



## PROPERTY SUMMARY

Nestled in the charming area of Victoria Terrace, Stafford, this delightful terraced house presents an excellent opportunity for those seeking a comfortable and inviting home. With two well-proportioned reception rooms, this property offers ample space for both relaxation and entertaining. The layout is thoughtfully designed, allowing for a seamless flow between the living areas, making it perfect for family gatherings or quiet evenings in.

2



1



2





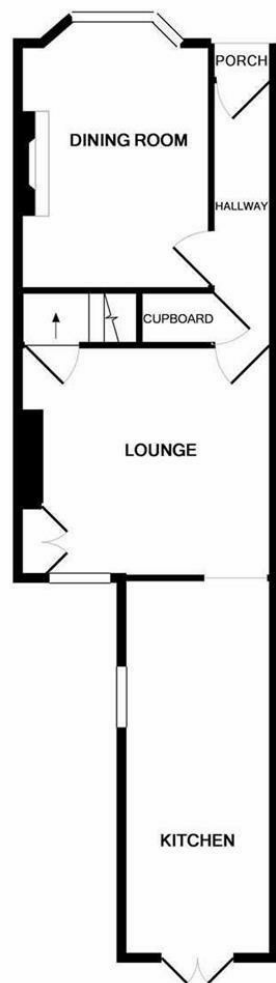












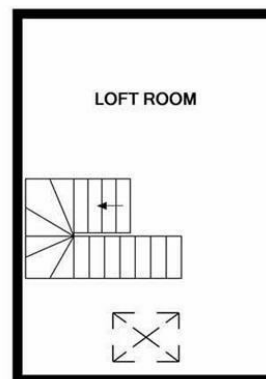
GROUND FLOOR  
APPROX. FLOOR  
AREA 483 SQ.FT.  
(44.9 SQ.M.)



1ST FLOOR  
APPROX. FLOOR  
AREA 401 SQ.FT.  
(37.3 SQ.M.)

TOTAL APPROX. FLOOR AREA 1116 SQ.FT. (103.7 SQ.M.)

Whilst every attempt has been made to ensure the accuracy of the floor plan contained here, measurements of doors, windows, rooms and any other items are approximate and no responsibility is taken for any error, omission, or mis-statement. This plan is for illustrative purposes only and should be used as such by any prospective purchaser. The services, systems and appliances shown have not been tested and no guarantee as to their operability or efficiency can be given  
Made with Metropix ©2016



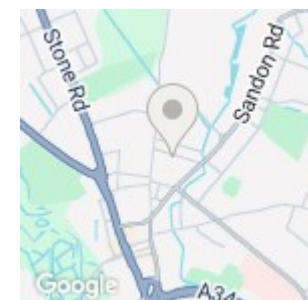
2ND FLOOR  
APPROX. FLOOR  
AREA 232 SQ.FT.  
(21.5 SQ.M.)

LOCAL AUTHORITY

TENURE  
Freehold

COUNCIL TAX BAND  
B

VIEWINGS  
By prior appointment only



Energy Efficiency Rating		
	Current	Potential
Very energy efficient - lower running costs		
(92 plus) A		
(81-91) B		
(69-80) C		
(55-68) D		
(39-54) E	56	60
(21-38) F		
(1-20) G		
Not energy efficient - higher running costs		
England & Wales	EU Directive 2002/91/EC	

Agents Note: Whilst every care has been taken to prepare these particulars, they are for guidance purposes only. All measurements are approximate and are for general guidance purposes only and whilst every care has been taken to ensure their accuracy, they should not be relied upon and potential buyers/tenants are advised to recheck the measurements