

Millstone Court, Stone, ST15 8AY
Offers In The Region Of £180,000
Council Tax Band: C



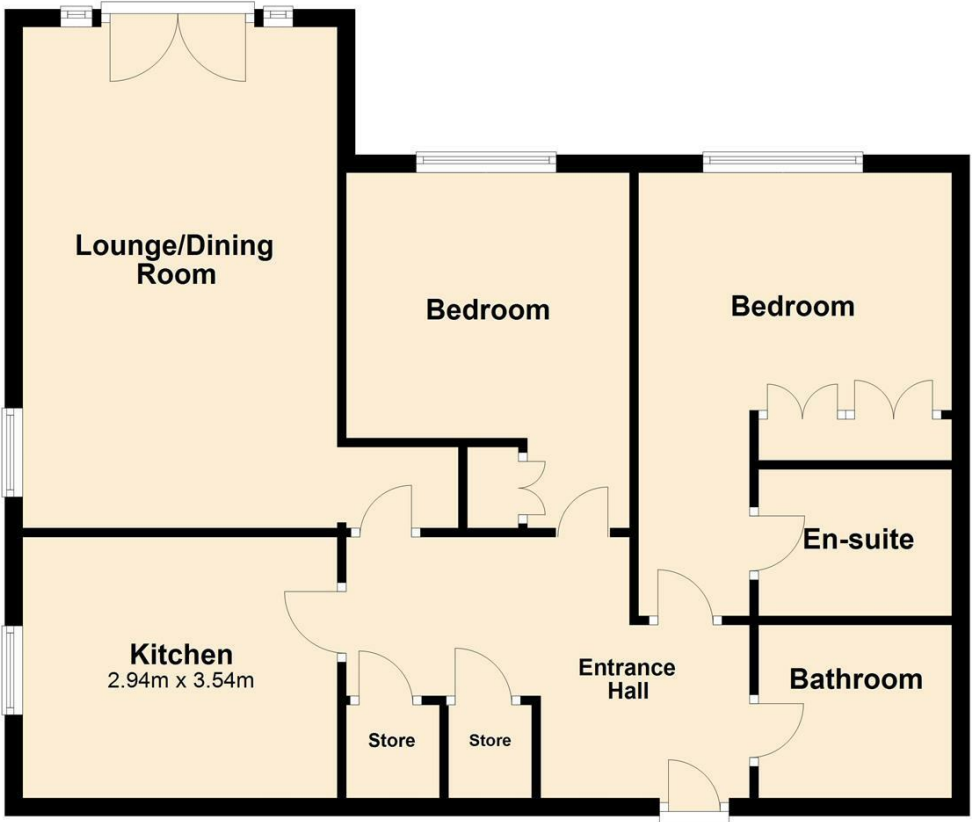
Stylish 2-Bedroom Apartment in Prime Stone Location – Walking Distance to Town Centre

Located within the popular Millstone Court development, this spacious and well-maintained second-floor apartment offers modern living just moments from the heart of Stone. Ideal for professionals, couples, or downsizers, the property enjoys a peaceful setting while being within walking distance to Stone's charming high street, offering a variety of independent shops, cafés, pubs, and restaurants.



Open House Staffordshire

Ground Floor



Energy Efficiency Rating		
	Current	Potential
Very energy efficient - lower running costs		
(92 plus) A		
(81-91) B		
(69-80) C		
(55-68) D		
(39-54) E		
(21-38) F		
(1-20) G		
Not energy efficient - higher running costs		
England & Wales		EU Directive 2002/91/EC