



£375,000

Ruskin Drive

Derrington, ST18 9LD

PROPERTY SUMMARY

Charming Four-Bedroom Detached Family Home in a Desirable Village Setting

Property Overview:

Nestled within a tranquil cul-de-sac in one of Stafford's most sought-after villages, this beautifully presented four-bedroom detached family home offers an exceptional blend of spacious living, modern amenities, and convenient access to Stafford Town Centre. The property boasts a thoughtfully designed layout, featuring:

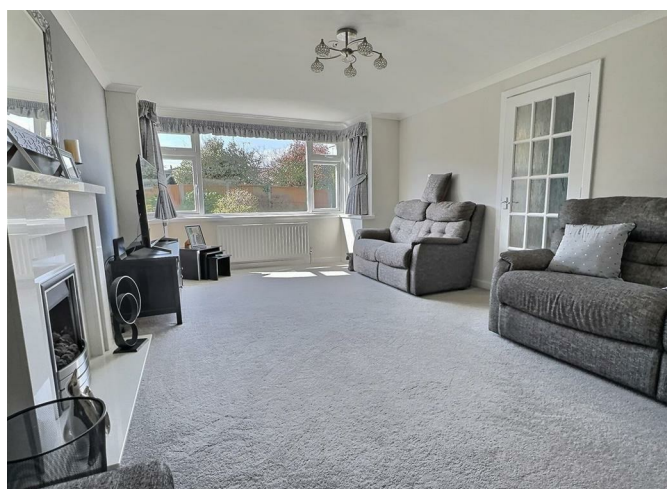
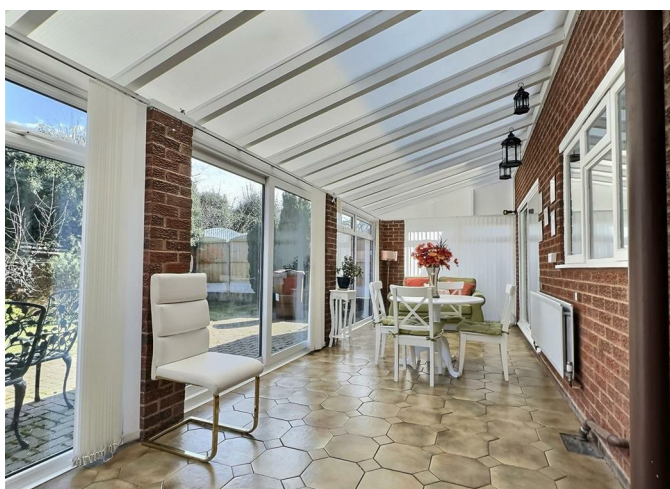
4



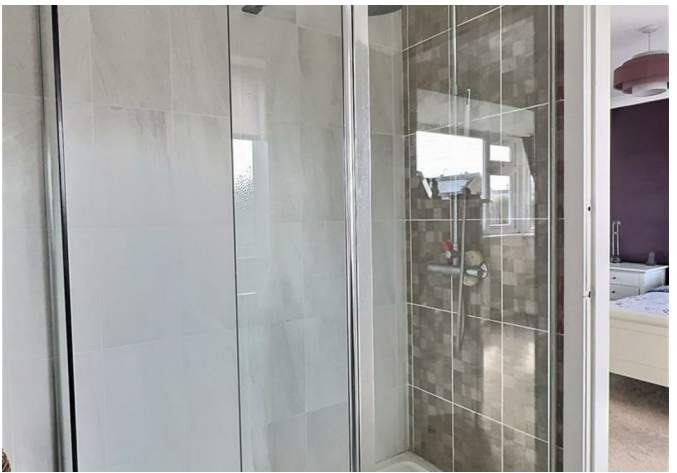
2



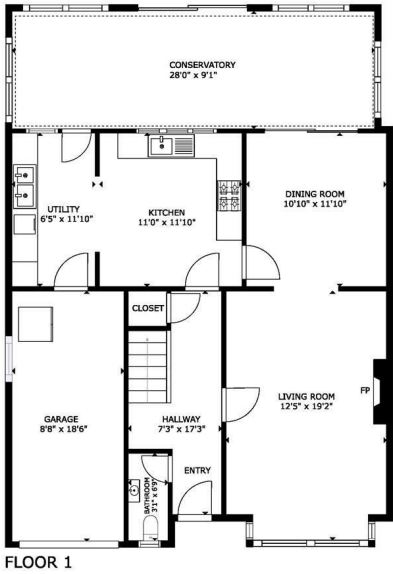
2



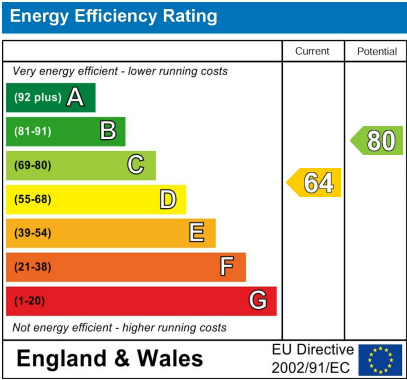
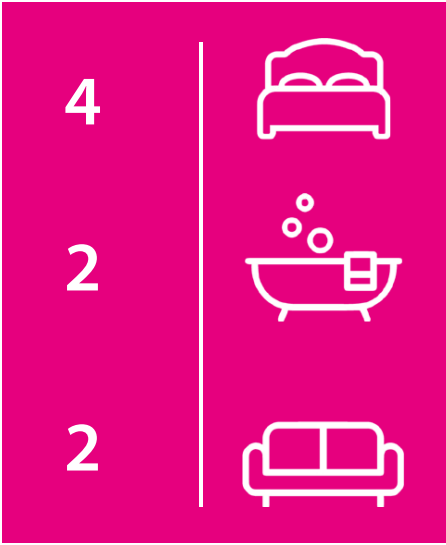








GROSS INTERNAL AREA
FLOOR 1: 1,148 sq. ft. FLOOR 2: 750 sq. ft.
TOTAL: 1,898 sq. ft.
SIZES AND DIMENSIONS ARE APPROXIMATE, ACTUAL MAY VARY



Agents Note: Whilst every care has been taken to prepare these particulars, they are for guidance purposes only. All measurements are approximate and are for general guidance purposes only and whilst every care has been taken to ensure their accuracy, they should not be relied upon and potential buyers/tenants are advised to recheck the measurements.



OPEN HOUSE STAFFORDSHIRE