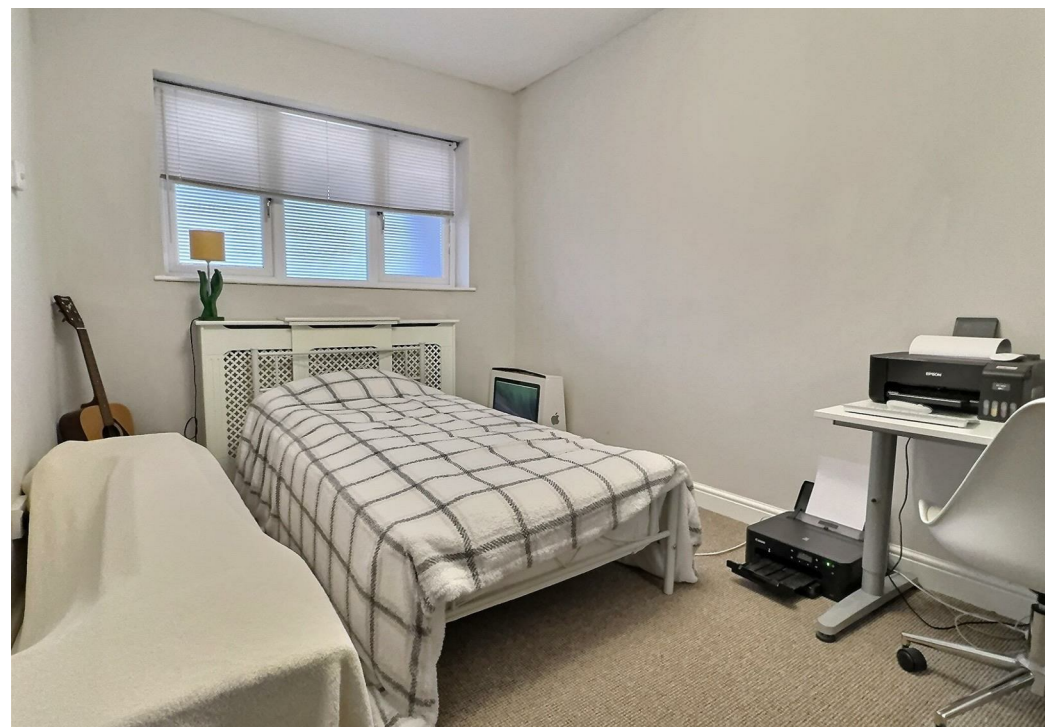
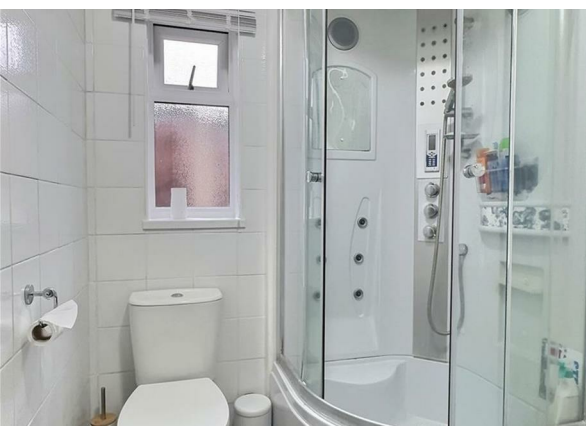


**Norton Green Lane, Norton Canes, WS11 9PR**  
**Offers In The Region Of £195,000**





# Norton Green Lane, Norton Canes, WS11 9PR

Offers In The Region Of £195,000

Council Tax Band: B

Welcome to Norton Green Lane, Norton Canes—a charming bungalow that combines village tranquillity with easy access to modern amenities. This well-presented property features a cosy reception room, three inviting bedrooms, a modern kitchen, and a sleek shower room. The interior is spacious and thoughtfully designed, offering both comfort and style.

Phonelines Open 24-7

Experience a new level of personal service – get in touch today to learn more!

Nestled in a peaceful setting off Norton Mews, this home is ideal for those who seek a sense of privacy while enjoying proximity to essentials. Norton Canes offers a friendly, community-driven environment with local shops, cafes, and the scenic Chasewater Country Park nearby. For commuters, the property is conveniently located near the M6 Toll and major routes to Cannock and Birmingham, making daily travel a breeze. The surrounding area is also well-served by schools, making it perfect for families.

Outside, a tidy garden provides a peaceful spot for outdoor relaxation, and the off-road parking space adds to the property's appeal. This bungalow is ideal for anyone seeking a blend of rural charm and urban convenience—schedule a viewing to fully appreciate what it has to offer

PHONELINES OPEN 24/7 CALL US FOR A FREE VALUATION OF YOUR HOME NO SALE NO FEE INCLUDES 360 TOUR VIDEO FLOORPLAN PROFESSIONAL IMAGES DRONE

## Ground Floor

### Lounge

12'7" x 12'0" (3.86 x 3.68)

The lounge offers a warm and inviting atmosphere, perfect for relaxation. With soft neutral tones and cosy carpet flooring, this space is designed for comfort. A central fireplace creates a focal point, providing both style and warmth. The large window allows natural light to fill the room, enhancing the airy ambiance. Ample space for seating arrangements makes this an ideal setting for unwinding after a long day or entertaining guests.

### Kitchen

10'0" x 8'2" (3.05 x 2.51)

The kitchen in this charming bungalow offers a practical and modern space, featuring a clean, streamlined design. Equipped with ample cabinetry, wood-effect countertops, and a stainless steel backsplash, it provides a functional and stylish workspace. This galley-style kitchen is well-lit and spacious enough to accommodate all your culinary needs, with integrated appliances, including an oven, hob, and extractor fan. A door leading to the rear adds convenience, providing easy access to outdoor spaces for al fresco dining or gardening.

### Bedroom One

10'11" x 10'9" (3.33 x 3.30)

This cosy bedroom offers a comfortable and versatile space perfect for relaxation or productivity. Featuring a neutral decor palette, it accommodates a bed, work desk, and storage space, making it ideal for use as a guest room, home office, or private retreat. The large window allows ample natural light, adding brightness and a welcoming atmosphere to the room.

### Shower Room

This modern shower room is designed for both style and functionality. The sleek, curved shower enclosure offers a rejuvenating space with its multiple shower jets, perfect for unwinding after a long day. Complemented by fresh white tiling and a contemporary vanity unit with ample storage, this room is both practical and elegant. The tiled flooring adds a further touch of sophistication, while the wall-mounted mirror brings in additional light, making this a refreshing and inviting space.

### Bedroom Two

12'4" x 8'2" (3.78 x 2.51)

This inviting second bedroom offers a calm and cosy retreat, complete with direct access to the garden through French doors that allow for abundant natural light. Perfect as a guest bedroom or a relaxing spot to unwind, it's a versatile space that could easily be adapted to suit your needs. The neutral décor and soft carpeting add to the room's warmth and comfort, making it a lovely addition to this charming bungalow.

### Bedroom Three

10'5" x 6'3" (3.20 x 1.93)

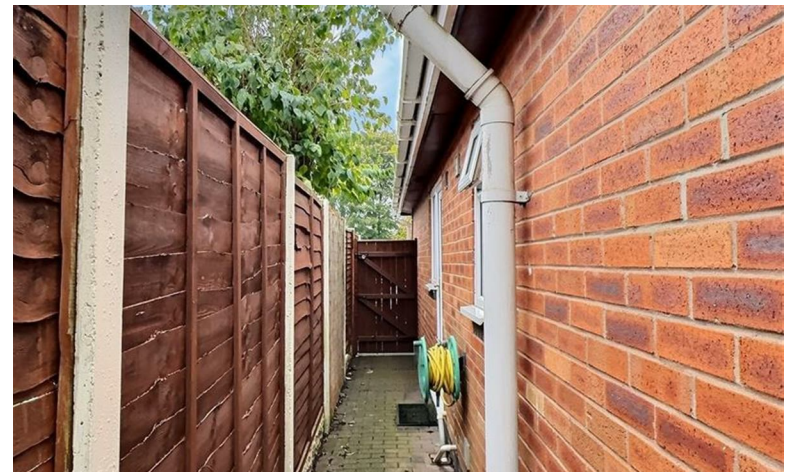
This spacious bedroom offers ample versatility, currently presented for illustrative purposes with AI-generated imagery to showcase the room's generous dimensions. Please note, the actual floor is carpeted to match the cosy aesthetic of the rest of the property. With a neutral colour scheme, this room is a perfect blank canvas for your personal touch, making it suitable for a guest bedroom, office, or additional storage space. \*Disclaimer: Image is for visualization purposes only to reflect room size.\*

### Hall

### Garden

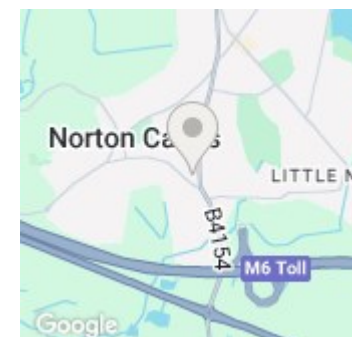
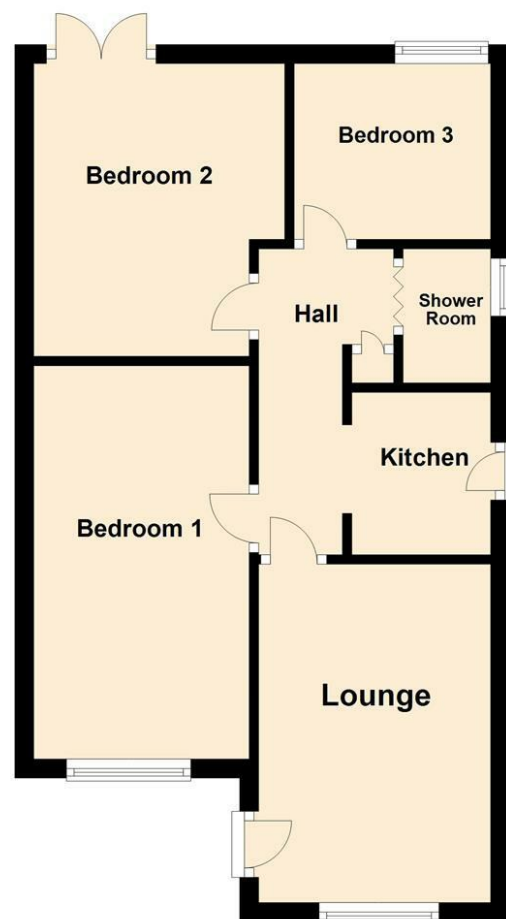
The garden of this charming bungalow offers a private and peaceful retreat, surrounded by mature trees and lush greenery. With two storage sheds and a level lawn, it's an ideal spot for both relaxation and practical storage solutions. The paved patio area provides a perfect space for outdoor seating and entertaining. This outdoor haven truly complements the tranquil village setting, offering a lovely escape from the bustle of everyday life.







## Ground Floor



Energy Efficiency Rating		
	Current	Potential
Very energy efficient - lower running costs		
(92 plus) <b>A</b>		<b>84</b>
(81-91) <b>B</b>		
(69-80) <b>C</b>		
(55-68) <b>D</b>	<b>63</b>	
(39-54) <b>E</b>		
(21-38) <b>F</b>		
(1-20) <b>G</b>		
Not energy efficient - higher running costs		
England & Wales		EU Directive 2002/91/EC