

**Attingham Drive, Cannock, WS11 7YB**

**Offers Over £350,000**

**Council Tax Band: D**

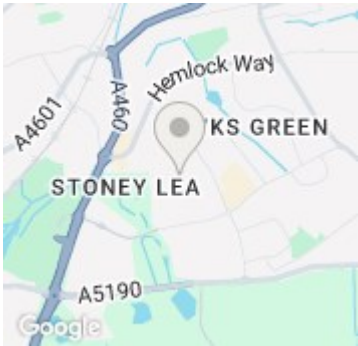
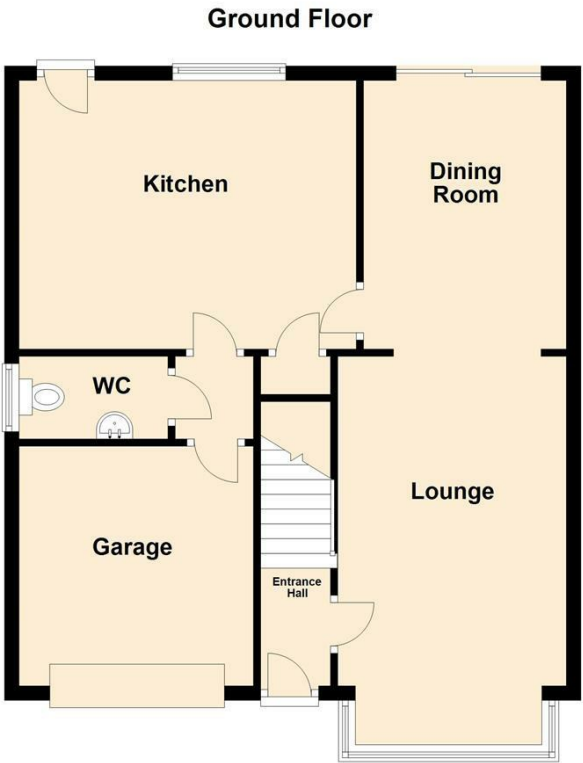




Welcome to this spacious and beautifully presented three-bedroom detached home, perfectly nestled in the highly sought-after location of Attingham Drive, Cannock. Tucked away in a peaceful cul-de-sac, this home offers exceptional privacy, occupying a prominent corner plot with an abundance of outdoor space. While offering three generous double bedrooms, this property boasts the size of a four-bedroom home, complete with a large family bathroom and a modern ensuite for the master bedroom.



Open House Staffordshire



Energy Efficiency Rating		
	Current	Potential
Very energy efficient - lower running costs		
(92 plus) <b>A</b>		<b>84</b>
(81-91) <b>B</b>		
(69-80) <b>C</b>	<b>71</b>	
(55-68) <b>D</b>		
(39-54) <b>E</b>		
(21-38) <b>F</b>		
(1-20) <b>G</b>		
Not energy efficient - higher running costs		
England & Wales		EU Directive 2002/91/EC 