



The Oval, Stafford, ST17 4US

Offers In The Region Of £180,000

Welcome to The Old School, The Oval, Stafford – a luxurious 2-bedroom duplex apartment situated on the top floor of a beautifully converted period school. This exceptional property boasts 3-meter high ceilings, sash windows, and is flooded with natural light.

Located near Stafford town centre, this residence offers a perfect blend of historic charm and modern living..

Chain Free Luxurious 2-Bedroom Duplex Apartment in Historic School Conversion

Overview:

Welcome to The Old School, The Oval, Stafford – a luxurious 2-bedroom duplex apartment situated on the top floor of a beautifully converted period school. This exceptional property boasts 3-meter high ceilings, sash windows, and is flooded with natural light.

Located near Stafford town centre, this residence offers a perfect blend of historic charm and modern living.

Open Plan Lounge Diner & Kitchen

:

Step into the expansive open plan living area, featuring sleek modern finishes and high ceilings. The lounge area is designed for relaxation and entertainment, while the kitchen is equipped with top-of-the-line appliances and ample counter space. The large windows not only enhance the room's brightness but also offer scenic views, creating an inviting and warm ambiance.

Bedrooms:

The apartment includes two spacious bedrooms, each thoughtfully designed to provide comfort and tranquillity. The master bedroom is a serene retreat with elegant decor and ample storage. The second bedroom, versatile in its use, can serve as a guest room, home office, or personal studio, accommodating your lifestyle needs.

Bathroom:

The contemporary bathroom is a blend of style and functionality, featuring modern fixtures, a sleek vanity, and a comfortable bathtub. The tasteful tiling and thoughtful design create a spa-like atmosphere for your daily routines.

Exterior:

The historic facade of the old school building adds to the property's charm, offering a sense of

heritage and uniqueness. The communal grounds are well-maintained, providing a pleasant outdoor space for residents to enjoy.

Local Information:

Situated near Stafford town centre, The Old School is conveniently located close to local amenities, including shops, restaurants, and cafes. Stafford Railway Station is within easy reach, offering excellent transport links to major cities. The area is also home to several parks and recreational facilities, making it ideal for outdoor enthusiasts.

This duplex apartment at The Old School, The Oval, Stafford, is a rare find, offering historic elegance combined with modern comforts. Don't miss the opportunity to make this exquisite property your new home.

For more information and to schedule a viewing, contact us today!

Discover the ease of selling your home with us — where exceptional service is just a call away, any hour, any day. Embark on a stress-free journey with our complimentary home valuation, and benefit from our 'No Sale, No Fee' assurance. Your listing will shine with our array of professional marketing tools:

360° Virtual Tours: Explore every corner with a click.

Vibrant Video Walkthroughs: A cinematic experience of your home.

Detailed Floor Plans: Meticulously mapped for buyers.

Professional Photography: Capturing the beauty of your space.

Elevated Drone Imagery: A breathtaking bird's-eye perspective.

Ready to showcase your home's true potential? Contact us and watch your listing soar. Experience the exceptional — let's connect today!

Open Plan Kitchen Diner & Living Room 20'11" x 25'3" (6.40 x 7.70)



Step into the heart of this luxurious

two-bedroom duplex apartment, where modern living meets timeless elegance. The open-plan lounge, kitchen, and dining area is a perfect blend of style and functionality. Flooded with natural light from the towering sash windows and graced with 3-metre high ceilings, this space feels both expansive and inviting.

The lounge area features a plush sectional sofa, ideal for relaxing or entertaining, complemented by a sleek, wall-mounted TV unit and contemporary decor. Adjacent, the dining space comfortably seats four, set against a backdrop of large windows that offer serene views of the surrounding greenery.

The kitchen is a culinary dream, boasting state-of-the-art appliances seamlessly integrated into glossy cabinetry, with ample counter space on the island that doubles as a breakfast bar. Elegant pendant lights add a touch of sophistication, making this space as beautiful as it is practical.

This room truly exemplifies modern living, providing a versatile and stylish environment perfect for both relaxation and social gatherings.

Master Bedroom 14'11" x 9'1" (4.56 x 2.79)

Welcome to the serene retreat of Bedroom One, where modern elegance meets comfort. This spacious room features a sloped ceiling adorned with exposed beams, adding character and charm. The rich, dark green walls create a calming atmosphere, perfectly complemented by the plush carpeting underfoot. Natural light pours in through the skylights, enhancing the room's airy feel. The room is tastefully furnished with a cosy double bed, stylish bedside tables, and ample storage options, making it a perfect sanctuary for rest and relaxation.

Bedroom Two 11'5" x 10'1" (3.50 x 3.09)



This charming second bedroom is a versatile space that perfectly blends function and style. Currently set up as a home office, the room is bathed in natural light from the skylight windows, creating a bright and inspiring atmosphere. The angled ceilings add character, while the neutral walls provide a calm backdrop. Plush carpeting offers comfort underfoot, making this room an ideal spot for work or relaxation. Whether used as a guest bedroom, office, or creative studio, this room adapts to your needs, making it a valuable addition to the home.

Bathroom



Communal Areas



The communal areas in this period school conversion are both impressive and welcoming. The main entrance features a spacious hallway with elegant black railings and a bold red accent wall adorned with historical photographs. The large windows allow plenty of natural light,

enhancing the bright and airy feel of the space. The grand staircase, with its classic design and dark stone steps, leads to the upper floors. These areas blend historical charm with modern functionality, providing a sophisticated entryway and common space for all residents.

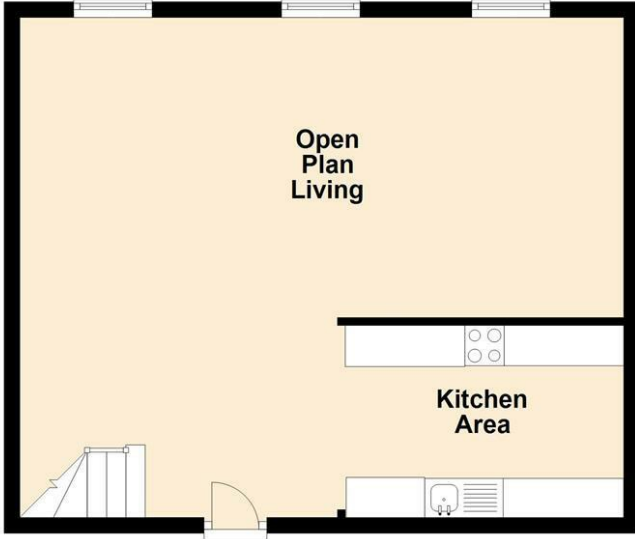
External



This luxurious duplex apartment is part of a beautifully converted period school building, showcasing classic red brick architecture. The entrance is framed by lush greenery, providing a warm and inviting atmosphere. The property is well-maintained with manicured bushes and a neatly paved pathway leading to the front door. Residents benefit from two allocated parking spaces, ensuring convenience and ease of access. The exterior retains the historic charm of the old school while offering modern amenities for contemporary living.

Floor Plan

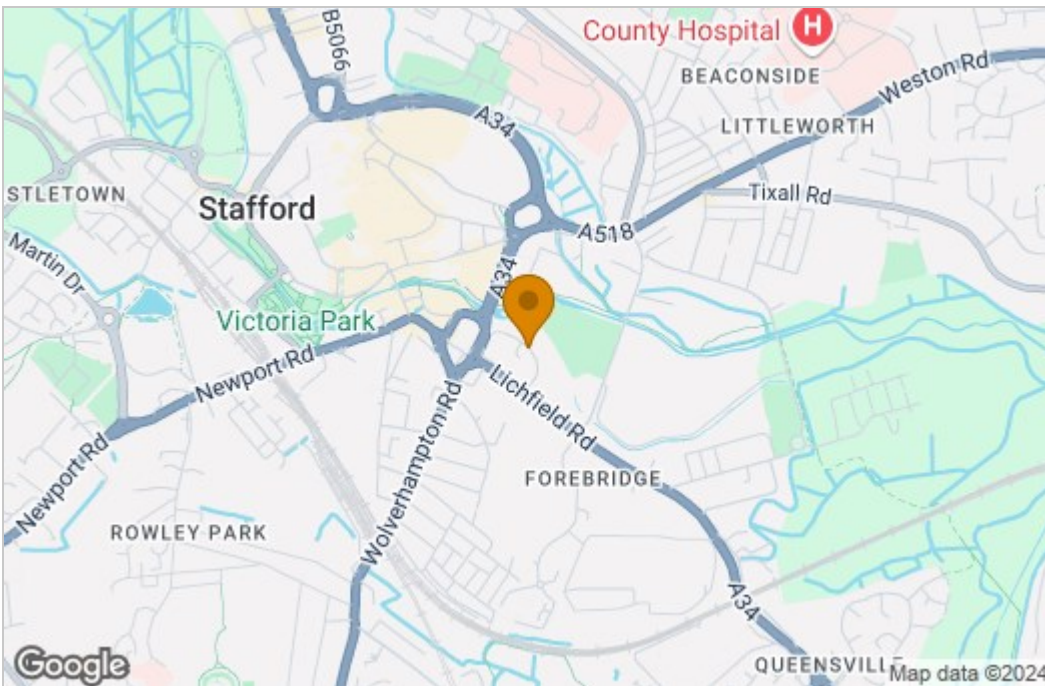
Ground Floor



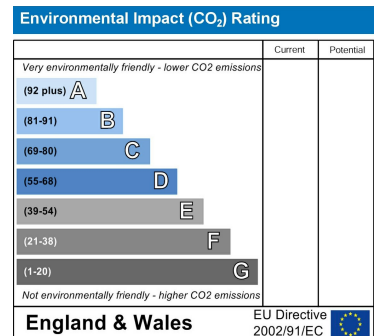
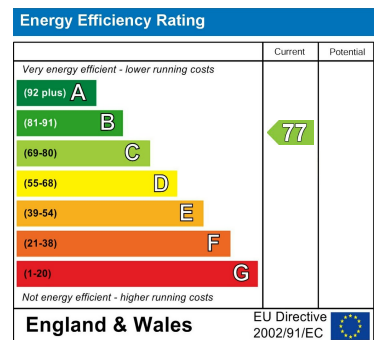
First Floor



Area Map



Energy Efficiency Graph



These particulars, whilst believed to be accurate are set out as a general outline only for guidance and do not constitute any part of an offer or contract. Intending purchasers should not rely on them as statements of representation of fact, but must satisfy themselves by inspection or otherwise as to their accuracy. No person in this firm's employment has the authority to make or give any representation or warranty in respect of the property.