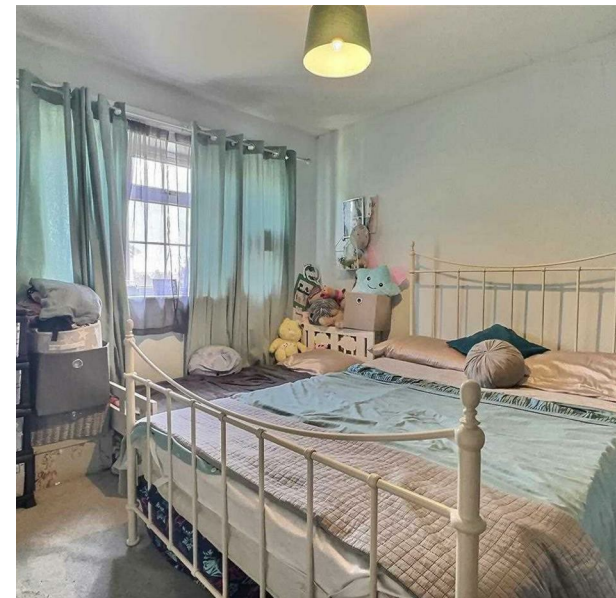


The Russetts, Stafford, ST17 9EL
Offers In The Region Of £150,000
Council Tax Band: B

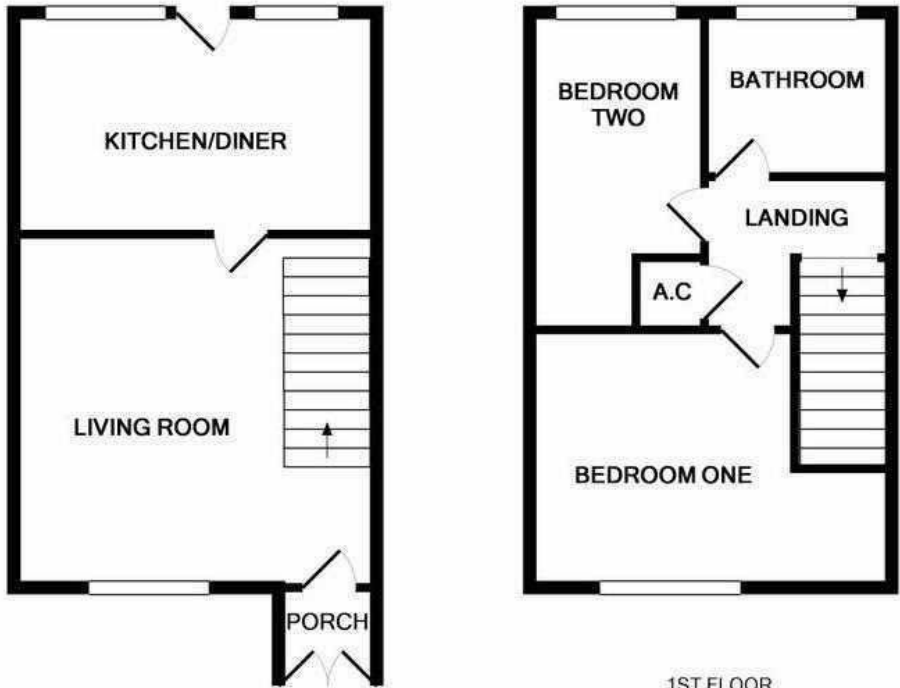


Ideal for First-Time Buyers and Investors!

Welcome to this well-maintained and inviting two-bedroom property, offering an excellent opportunity for first-time buyers and investors alike. Situated in the sought-after residential area of Rising Brook, this home is conveniently close to major commuter links such as the M6 and A449, local amenities, and convenient bus routes into the town centre.



Open House Staffordshire



GROUND FLOOR
APPROX. FLOOR
AREA 290 SQ.FT.
(26.9 SQ.M.)

1ST FLOOR
APPROX. FLOOR
AREA 276 SQ.FT.
(25.6 SQ.M.)

TOTAL APPROX. FLOOR AREA 566 SQ.FT. (52.5 SQ.M.)



Energy Efficiency Rating		
	Current	Potential
Very energy efficient - lower running costs		
(92 plus) A		89
(81-91) B		
(69-80) C		
(55-68) D	54	
(39-54) E		
(21-38) F		
(1-20) G		
Not energy efficient - higher running costs		
England & Wales		EU Directive 2002/91/EC 