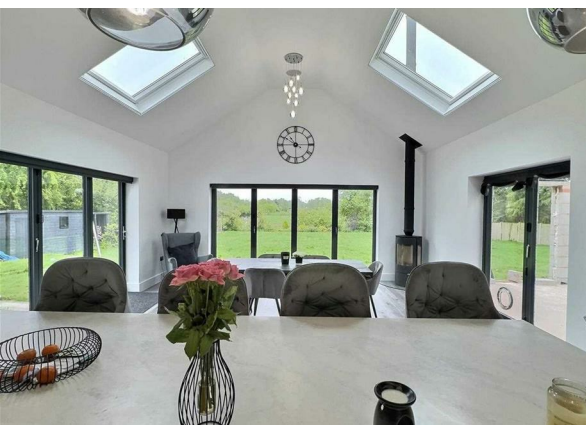


Meadow Lane, Little Haywood, Stafford, ST18 0TT
Offers In The Region Of £789,000
Council Tax Band: E



Phonelines Open 24-7
Experience a new level of personal service – get in touch today to learn more!

Discover the epitome of rural sophistication with this beautifully renovated five-bedroom detached dorma bungalow, nestled in the quaint village of Little Haywood, Staffordshire. Boasting a complete high-standard refurbishment, this property is a sanctuary of style and comfort in the heart of England's charming countryside.



Open House Staffordshire



Total area: approx. 222.5 sq. metres



Energy Efficiency Rating		
	Current	Potential
Very energy efficient - lower running costs		
(92 plus) A		
(81-91) B		
(69-80) C		
(55-68) D		
(39-54) E		
(21-38) F		
(1-20) G		
Not energy efficient - higher running costs		
England & Wales		
EU Directive 2002/91/EC		