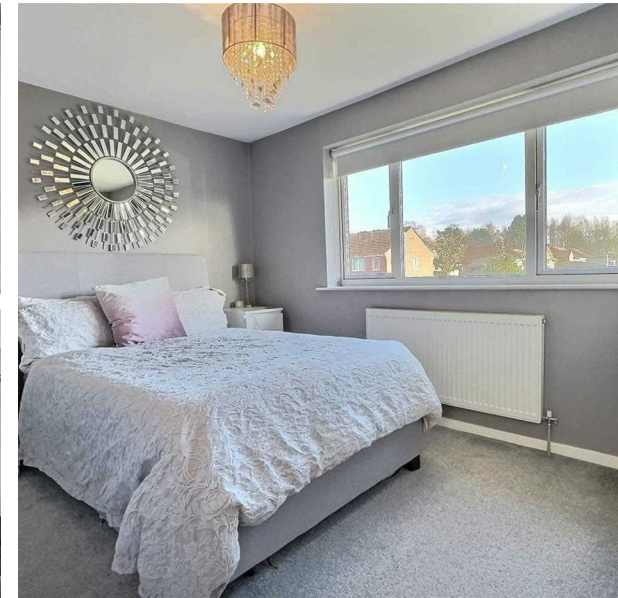


**Stagborough Way, Hednesford, Cannock, WS12 1UD**  
**Offers In The Region Of £220,000**  
**Council Tax Band: B**



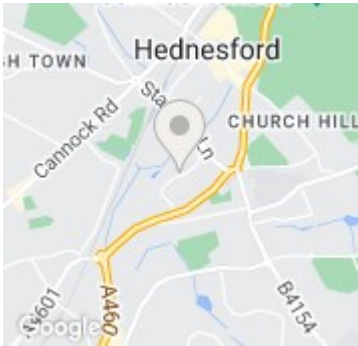


**\*\*Charming 2-Bedroom Semi-Detached Home in Idyllic Hednesford – A Sublime Mix of Comfort and Convenience\*\***

Nestled in the serene neighbourhood of Stagborough Way, this delightful 2-bedroom semi-detached home presents a perfect harmony of modern living and cosy comfort, ideal for first-time buyers, small families, or those looking to downsize. With an inviting price of £220,000 (offers in the region), this property stands as a testament to both quality and value in the sought-after area of Hednesford, Cannock.



Open House Staffordshire



Energy Efficiency Rating		
	Current	Potential
Very energy efficient - lower running costs		
(92 plus) A		88
(81-91) B		
(69-80) C	71	
(55-68) D		
(39-54) E		
(21-38) F		
(1-20) G		
Not energy efficient - higher running costs		
England & Wales	EU Directive 2002/91/EC	