

Dyke Road, Armitage, Rugeley, WS15 4TR
Offers In The Region Of £185,000
Council Tax Band: B

Open House
estate agents



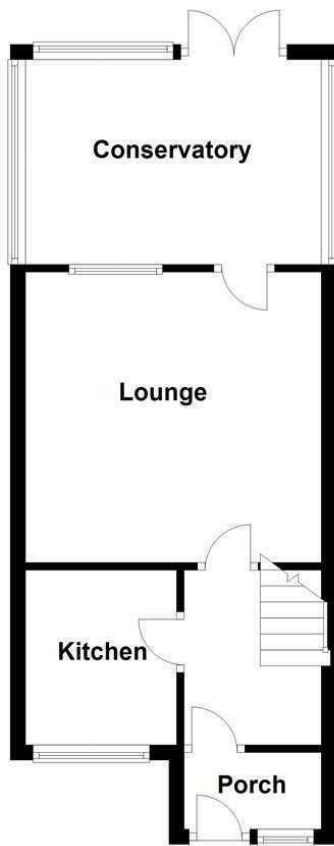
Modern Convenience in a Desirable Location

Welcome to this contemporary two-bedroom property, conveniently situated in a popular residential development within walking distance of local shops, amenities, health facilities, and excellent transport links.

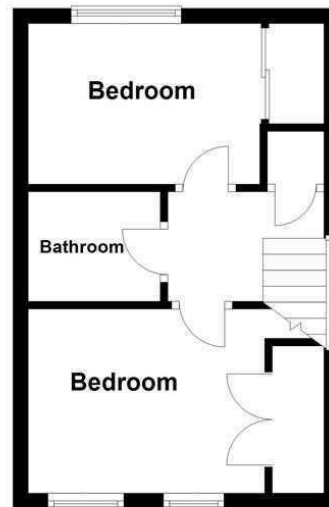


Open House Staffordshire

Ground Floor



First Floor



Energy Efficiency Rating		
	Current	Potential
Very energy efficient - lower running costs		
(92 plus) A		92
(81-91) B		
(69-80) C	72	
(55-68) D		
(39-54) E		
(21-38) F		
(1-20) G		
Not energy efficient - higher running costs		
England & Wales	EU Directive 2002/91/EC	